

THE MARK LEFT BEHIND

A NATIONAL ANALYSIS OF ACE EXPOSURE
AND TEEN FLOURISHING (AGES 0-17) 2021-2023



NISHA NIBU, ANNA KOPACHEVSKY, BRENDAN KWAN

HOW DO ADVERSE CHILDHOOD EXPERIENCES AFFECT CHILDREN'S EMOTIONAL AND BEHAVIORAL DEVELOPMENT IN THE UNITED STATES?

ACES
Adverse Childhood Experiences



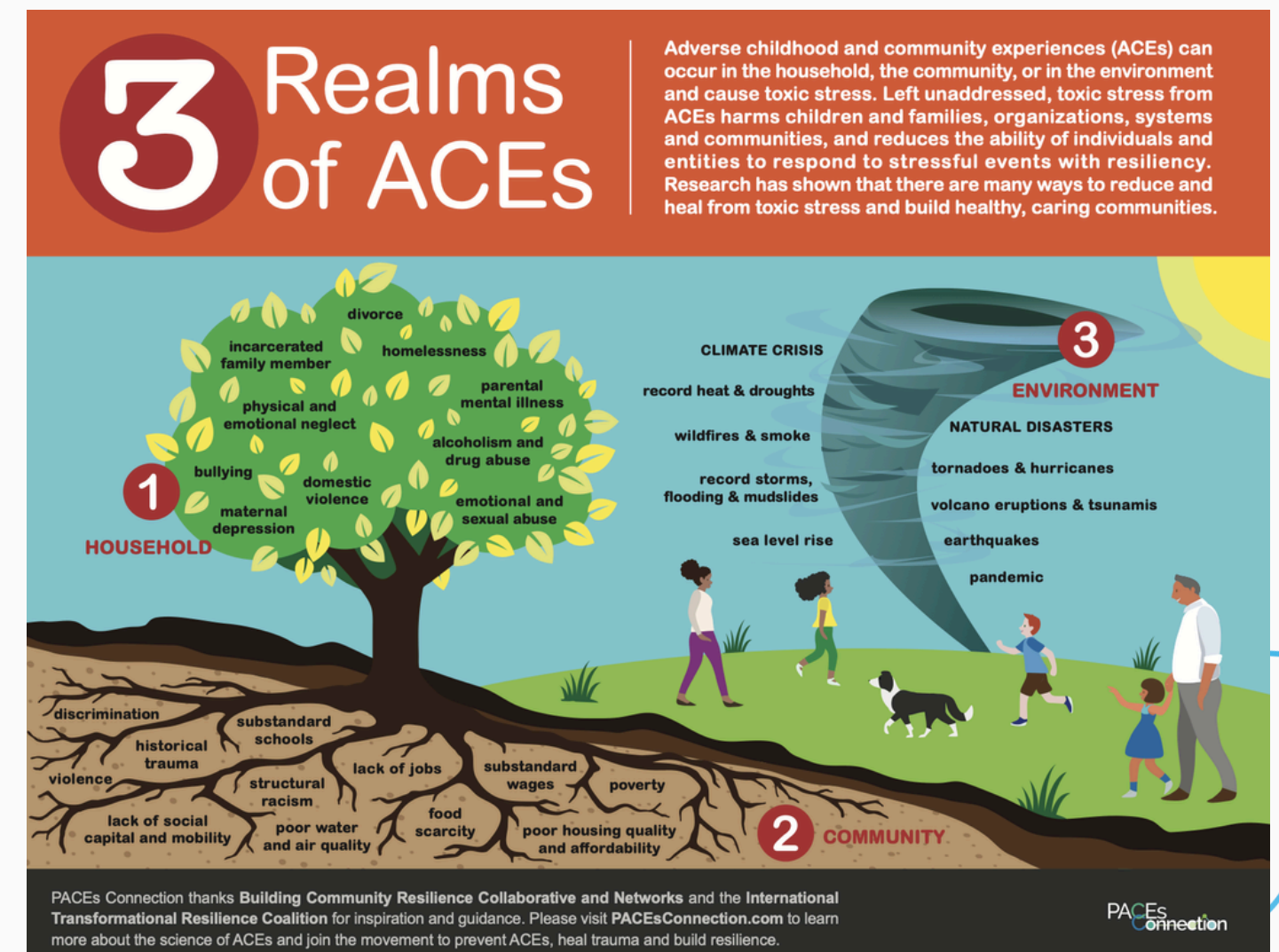
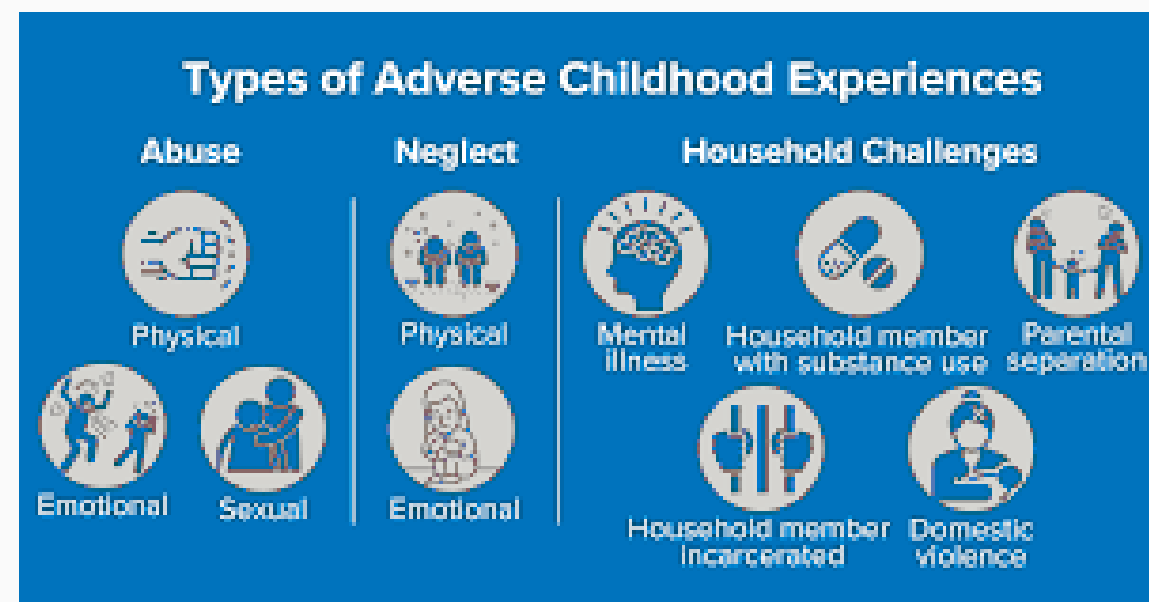
ADVERSE CHILDHOOD EXPERIENCES

GROWING UP EXPERIENCING ANY OF THE FOLLOWING 10 CONDITIONS IN THE HOUSEHOLD PRIOR TO AGE 18

- PHYSICAL ABUSE
- EMOTIONAL ABUSE
- SEXUAL ABUSE
- PHYSICAL NEGLECT
- EMOTIONAL NEGLECT
- ALCOHOL OR DRUG ABUSE BY A PARENT
- MENTALLY ILL PARENT
- DIVORCE
- INCARCERATION OF A PARENT
- CHILDHOOD DOMESTIC VIOLENCE

ACES FALL INTO THREE LARGE CATEGORIES:

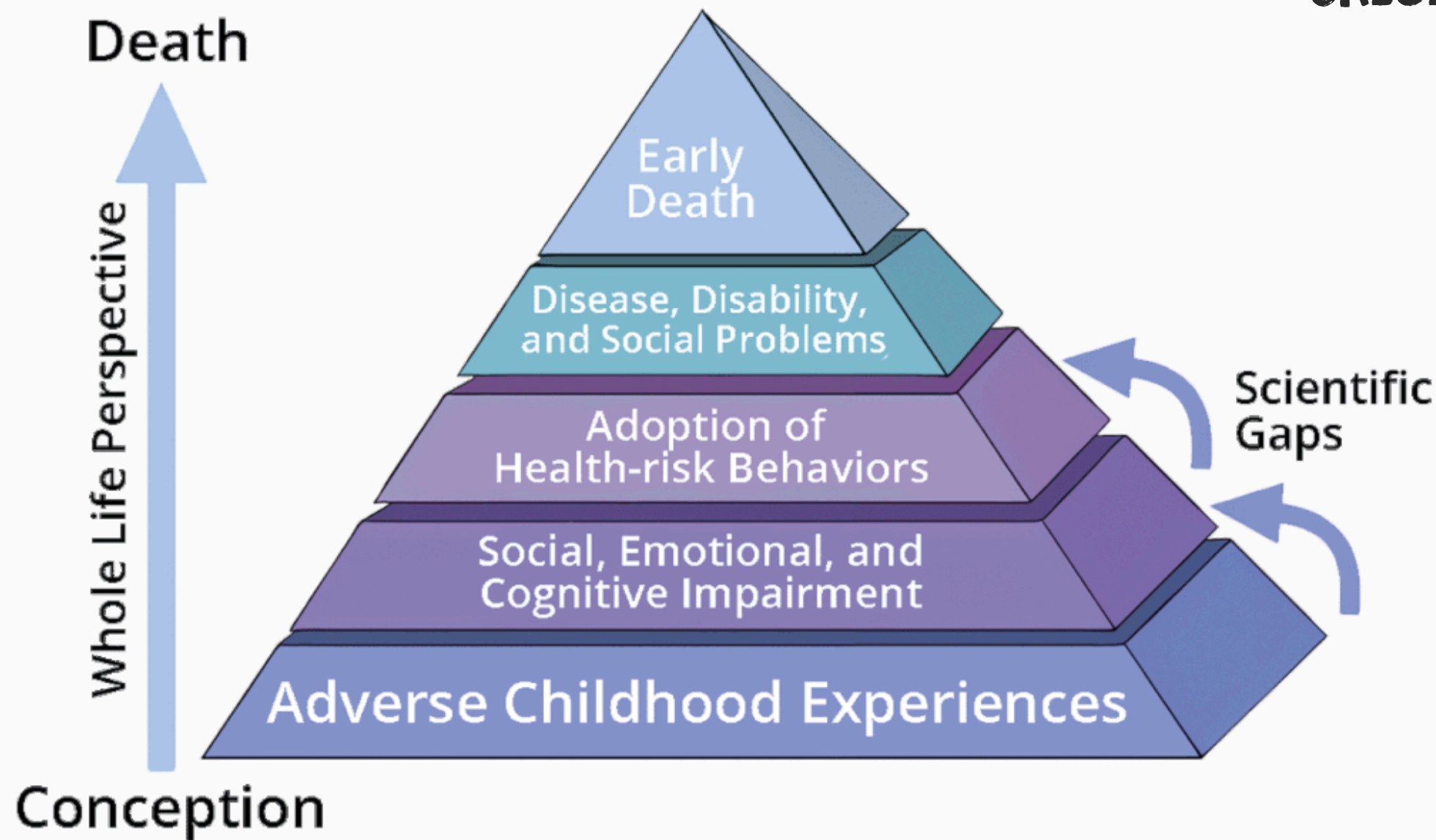
- ADVERSE CHILDHOOD EXPERIENCES
- ADVERSE COMMUNITY EXPERIENCES
- ADVERSE CLIMATE EXPERIENCES





ORIGIN OF THIS STUDY

ORIGINAL ACE STUDY WAS CONDUCTED AT
KAISER PERMANENTE
FROM 1995 TO 1997



“ADULTS WHO REPORTED EXPERIENCING ≥ 4 CHILDHOOD ADVERSITIES WERE AT MUCH HIGHER RISK OF EXPERIENCING MANY NEGATIVE HEALTH RISK BEHAVIORS AND OUTCOMES IN ADULTHOOD, INCLUDING MENTAL HEALTH PROBLEMS, SEXUAL VIOLENCE VICTIMIZATION, AND PREMATURE DEATH”
(GERVIN , ET.AL 2022)



KAISER
PERMANENTE®

2021-2022 & 2022-2023 NATIONAL SURVEY OF CHILDREN'S HEALTH

- NSCH IS DESIGNED TO PRODUCE NATIONAL AND STATE-LEVEL DATA ON THE PHYSICAL AND EMOTIONAL HEALTH OF CHILDREN 0- 17 YEARS OLD IN THE US

DATA IS BASED ON PARENT REPORTS, IT REFLECTS HOW PARENTS AND GUARDIANS PERCEIVE THEIR CHILDREN'S ABILITY TO REGULATE EMOTIONS, COMPLETE TASKS, AND SHOW INTEREST IN LEARNING.

- **TOTAL OF 104,995 SURVEYS:2021 AND 2022**
50,892 SURVEYS: 2021
54,103 SURVEYS:2022

- **TOTAL OF 109,265 SURVEYS: 2022 AND 2023.**
54,103 SURVEYS: 2022
55,162 SURVEYS: 2023

About Adverse Childhood Experiences

US Value: 14.5 %

Top State(s): New Jersey: 9.6 %

Bottom State(s): Montana: 22.5 %

Definition: Percentage of children ages 0-17 who have ever experienced two or more of the following: parental divorce or separation; household with an alcohol or drug problem; neighborhood violence victim or witness; household with mental illness; domestic violence witness; parent served jail time; treated or judged unfairly due to race/ethnicity, sexual orientation, gender identity, or a health condition or disability; or death of a parent (2-year estimate)

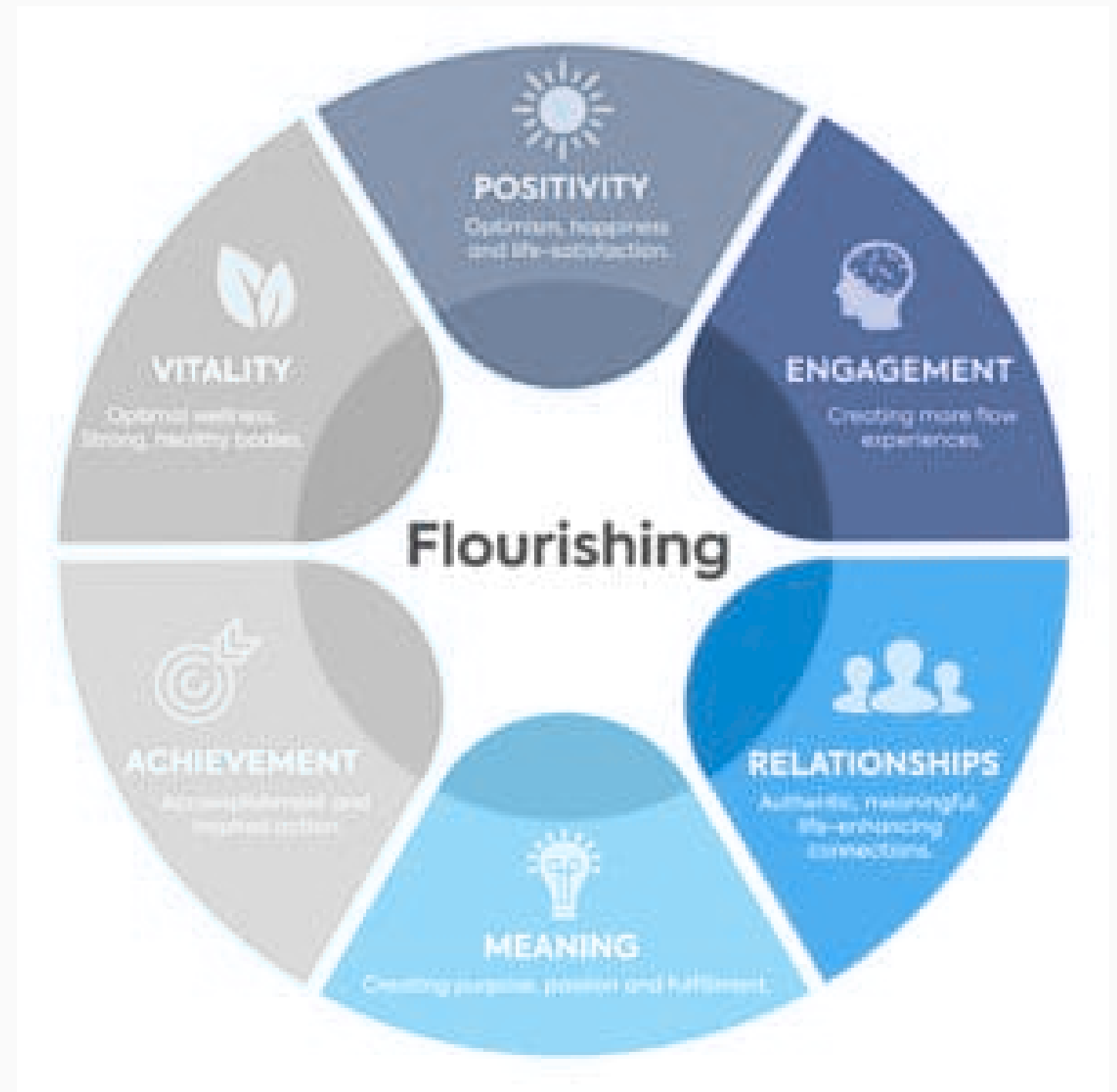
Data Source and Years(s): U.S. Department of Health and Human Services, Health Resources and Services Administration, Maternal and Child Health Bureau, National Survey of Children's Health, 2022-2023

FLOURISHING

FLOURISHING DEFINITION IN THIS CONTEXT: MEASURE OF EMOTIONAL AND BEHAVIORAL WELL-BEING. FOR CHILDREN AGES 6-17, FLOURISHING IS DEFINED BY POSITIVE RESPONSES TO THREE QUESTIONS:

- 1. HOW OFTEN DOES THIS CHILD SHOW INTEREST AND CURIOSITY IN LEARNING NEW THINGS?**
- 2. HOW OFTEN DOES THIS CHILD WORK TO FINISH TASKS THEY START?**
- 3. HOW OFTEN DOES THIS CHILD STAY CALM AND IN CONTROL WHEN FACED WITH A CHALLENGE?**

CHILDREN WHO RESPOND “USUALLY” OR “ALWAYS” TO THESE ITEMS ARE CONSIDERED TO MEET FLOURISHING CRITERIA.



FLOURISHING

Current Search Criteria

Survey: 2021-2022 National Survey of Children's Health
 Starting Point: Title V Maternal and Child Health Services
 Block Grant Measures
 State/Region: Nationwide (quick edit)
 Topic: National Outcome Measures
 Question: NOM: Flourishing for children and adolescents, age 6-17 years
 Sub Group: Adverse childhood experiences

Edit Search Criteria

Select a State or Region to Compare
 Adverse childhood experiences
 Change Question, Topic or Survey

National Outcome Measure: Percent of children, ages 6 through 17, who are flourishing

Download & Print

		Met flourishing criteria	Did not meet flourishing criteria	Total %
No adverse childhood experiences	%	68.7	31.3	100.0
	C.I.	67.7 - 69.7	30.3 - 32.3	
	Sample Count	24,130	11,510	
	Pop. Est.	18,645,213	8,480,407	
One adverse childhood experience	%	60.0	40.0	100.0
	C.I.	58.4 - 61.7	38.3 - 41.6	
	Sample Count	7,994	5,994	
	Pop. Est.	6,893,321	4,589,398	
Two or more adverse childhood experiences	%	43.6	56.4	100.0
	C.I.	41.9 - 45.3	54.7 - 58.1	
	Sample Count	5,642	7,968	
	Pop. Est.	4,468,094	5,776,197	

C.I. = 95% Confidence Interval.
 Percentages and population estimates (Pop.Est.) are weighted to represent child population in US.

ABOUT 43-44% OF CHILDREN WITH TWO OR MORE ACES MET ALL FLOURISHING CRITERIA, COMPARED WITH NEARLY 69% OF CHILDREN WITH NO ACES. THERE WAS A 25% DIFFERENCE THAT HIGHLIGHTS HOW GREATER ADVERSITY IS LINKED WITH LOWER EMOTIONAL STABILITY, PERSEVERANCE, AND CURIOSITY.

ACCORDING TO THE U.S. CENSUS BUREAU, THE TOTAL U.S. CHILD POPULATION DECLINED SLIGHTLY FROM 73.6 MILLION IN 2021 TO 72.8 MILLION IN 2023, YET THE PROPORTIONS OF CHILDREN AFFECTED BY ACES AND RELATED BEHAVIORAL DEVELOPMENT DIFFICULTIES REMAINED STABLE.

DESPITE DEMOGRAPHIC SHIFTS, MILLIONS OF U.S. CHILDREN CONTINUE TO EXPERIENCE THE DEVELOPMENTAL AND EMOTIONAL EFFECTS OF ACES.

Current Search Criteria

Survey: 2022-2023 National Survey of Children's Health
 Starting Point: Title V Maternal and Child Health Services
 Block Grant Measures
 State/Region: Nationwide (quick edit)
 Topic: National Outcome Measures
 Question: NOM: Flourishing for children and adolescents, age 6-17 years
 Sub Group: Adverse childhood experiences

Edit Search Criteria

Select a State or Region to Compare
 Adverse childhood experiences
 Change Question, Topic or Survey

National Outcome Measure: Percent of children, ages 6 through 17, who are flourishing

Download & Print

		Met flourishing criteria	Did not meet flourishing criteria	Total %
No adverse childhood experiences	%	68.8	31.2	100.0
	C.I.	67.9 - 69.7	30.3 - 32.1	
	Sample Count	25,549	12,482	
	Pop. Est.	18,759,570	8,515,636	
One adverse childhood experience	%	59.1	40.9	100.0
	C.I.	57.5 - 60.7	39.3 - 42.5	
	Sample Count	8,407	6,341	
	Pop. Est.	6,805,985	4,707,852	
Two or more adverse childhood experiences	%	43.6	56.4	100.0
	C.I.	42.0 - 45.3	54.7 - 58.0	
	Sample Count	5,818	8,112	
	Pop. Est.	4,563,871	5,900,669	

C.I. = 95% Confidence Interval.
 Percentages and population estimates (Pop.Est.) are weighted to represent child population in US.

<https://www.childhealthdata.org/browse/survey/results?q=10789&r=1&g=1232>

<https://www.childhealthdata.org/browse/survey/results?q=11341&r=1&g=1231>



MENTAL, EMOTIONAL, & BEHAVIORAL PROBLEMS

<https://www.childhealthdata.org/browse/survey/results?q=11835&r=1&g=1131>

Current Search Criteria

Survey: 2021-2022 National Survey of Children's Health
 Starting Point: Title V Maternal and Child Health Services
 Block Grant Measures
 State/Region: Nationwide (quick edit)
 Topic: National Outcome Measures
 Question: NOM: Adverse childhood experiences ⓘ
 Sub Group: Mental, emotional, developmental or behavioral problems

Edit Search Criteria

Select a State or Region to Compare ▾
 Mental, emotional, developmental or behavioral pr ▾
 Change Question, Topic or Survey

National Outcome Measure: Percent of children, ages 0 through 17, who have experienced 2 or more adverse childhood experiences ⓘ Download & Print  

		Experienced 2 or more adverse childhood experiences	Experienced 0-1 adverse childhood experiences	Total %
Child has 1 or more reported MEDB problems, and/or qualifies on CSHCN Screener emotional, behavioral or developmental criteria	%	34.7	65.3	100.0
	C.I.	33.5 - 36.0	64.0 - 66.5	
	Sample Count	7,856	15,244	
	Pop. Est.	5,187,336	9,746,724	
Child does not currently have mental, emotional, developmental, or behavioral problems	%	14.0	86.0	100.0
	C.I.	13.4 - 14.6	85.4 - 86.6	
	Sample Count	7,883	55,105	
	Pop. Est.	6,376,186	39,285,289	

C.I. = 95% Confidence Interval.
 Percentages and population estimates (Pop.Est.) are weighted to represent child population in US.

2021-2023 NSCH REVEAL A CONSISTENT RELATIONSHIP BETWEEN ACES AND CHILDREN'S EMOTIONAL AND BEHAVIORAL OUTCOMES. AMONG CHILDREN WHO HAD MEDB PROBLEMS, ABOUT 35% HAD EXPERIENCED TWO OR MORE ACES, COMPARED TO ONLY ABOUT 14% AMONG CHILDREN WITHOUT SUCH PROBLEMS, THAT'S AN 11% DIFFERENCE.

CHILDREN WITH BEHAVIORAL OR EMOTIONAL DIFFICULTIES WERE ABOUT 2.5 TIMES MORE LIKELY TO HAVE FACED MULTIPLE ACES THAN THOSE WITHOUT THESE ISSUES. CONVERSELY, THE MAJORITY OF CHILDREN WITHOUT MEDB PROBLEMS, ABOUT 86%, HAD EXPERIENCED FEW OR NO ACES, SUGGESTING THAT LIMITED EXPOSURE TO ADVERSITY IS ASSOCIATED WITH POSITIVE DEVELOPMENTAL OUTCOMES.

<https://www.childhealthdata.org/browse/survey/results?q=11794&r=1&g=1173>

Current Search Criteria

Survey: 2022-2023 National Survey of Children's Health
 Starting Point: Title V Maternal and Child Health Services
 Block Grant Measures
 State/Region: Nationwide (quick edit)
 Topic: National Outcome Measures
 Question: NOM: Adverse childhood experiences ⓘ
 Sub Group: Mental, emotional, developmental or behavioral problems

Edit Search Criteria

Select a State or Region to Compare ▾
 Mental, emotional, developmental or behavioral pr ▾
 Change Question, Topic or Survey

National Outcome Measure: Percent of children, ages 0 through 17, who have experienced 2 or more adverse childhood experiences ⓘ Download & Print  

		Experienced 2 or more adverse childhood experiences	Experienced 0-1 adverse childhood experience	Total %
Child has 1 or more reported MEDB problems, and/or qualifies on CSHCN Screener EBD criteria	%	34.7	65.3	100.0
	C.I.	33.6 - 35.9	64.1 - 66.4	
	Sample Count	8,259	17,004	
	Pop. Est.	5,472,321	10,278,699	
Child does not currently have mental, emotional, developmental, or behavioral problems	%	13.7	86.3	100.0
	C.I.	13.2 - 14.3	85.7 - 86.8	
	Sample Count	7,765	56,678	
	Pop. Est.	6,186,129	38,874,913	

C.I. = 95% Confidence Interval.
 Percentages and population estimates (Pop.Est.) are weighted to represent child population in US.

TRENDS ACROSS TIME



GREATER LEVELS OF ACES = POORER EMOTIONAL AND BEHAVIORAL DEVELOPMENT

CHILDREN WITH MULTIPLE ACES= LESS LIKELY TO FLOURISH & 2.5 TIMES MORE LIKELY TO EXPERIENCE MEDBS CHALLENGES THAN THOSE WITH FEW OR NO ACES.

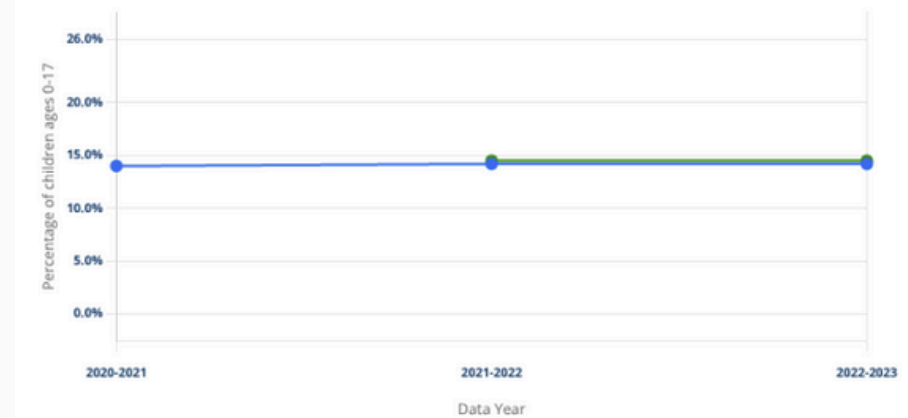
THE STABILITY OF OUR FINDINGS FROM 2021-2023 SHOWS THAT THIS RELATIONSHIP **HOLDS STEADY ACROSS TIME, EVEN AS THE NATIONAL CHILD POPULATION HAS DECLINED SLIGHTLY ACCORDING TO THE UNITED STATES CENSUS BUREAU.**

Adverse Childhood Experiences Trends

Percentage of children ages 0-17 who have ever experienced two or more of the following adverse experiences: parental divorce or separation; household with an alcohol or drug problem; household with mental illness; neighborhood violence victim or witness; domestic violence witness; parent served jail time; treated or judged unfairly due to race/ethnicity; treated or judged unfairly due to health condition or disability; or death of a parent (2-year estimate)

Population:

General Population



United States
Line breaks indicate a change in methodology and may not be comparable
Source: U.S. Department of Health and Human Services, Health Resources and Services Administration, Maternal and Child Health Bureau, National Survey of Children's Health

TIMEFRAME (SELECT 1)
2022-2023

DATA TYPE
 Percent Margin of Error

To download chart data, use the [Download Data](#) button.

United States

Number of ACEs		
2 or more ACEs	1 ACE	No ACEs
%	%	%
16.7%	21.5%	61.8%

TIMEFRAME (SELECT 1)
2021-2022

DATA TYPE
 Percent Margin of Error

To download chart data, use the [Download Data](#) button.

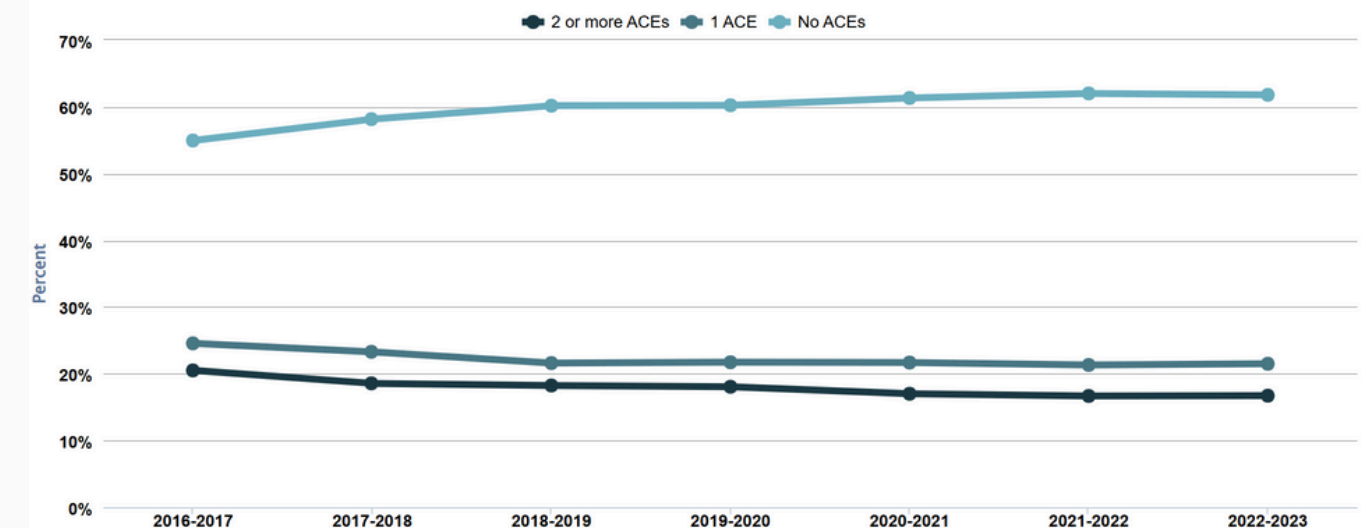
United States

Number of ACEs		
2 or more ACEs	1 ACE	No ACEs
%	%	%
16.7%	21.3%	62.0%

Table | Percent of children with adverse childhood experiences (ACEs) by Total | State Health Access Data...

SHADAC analysis of the National Survey of Children's Health (NSCH) public-use files. The NSCH is funded and directed by the Health Resources and Services Administration's Maternal and Child Health...

shadac.org





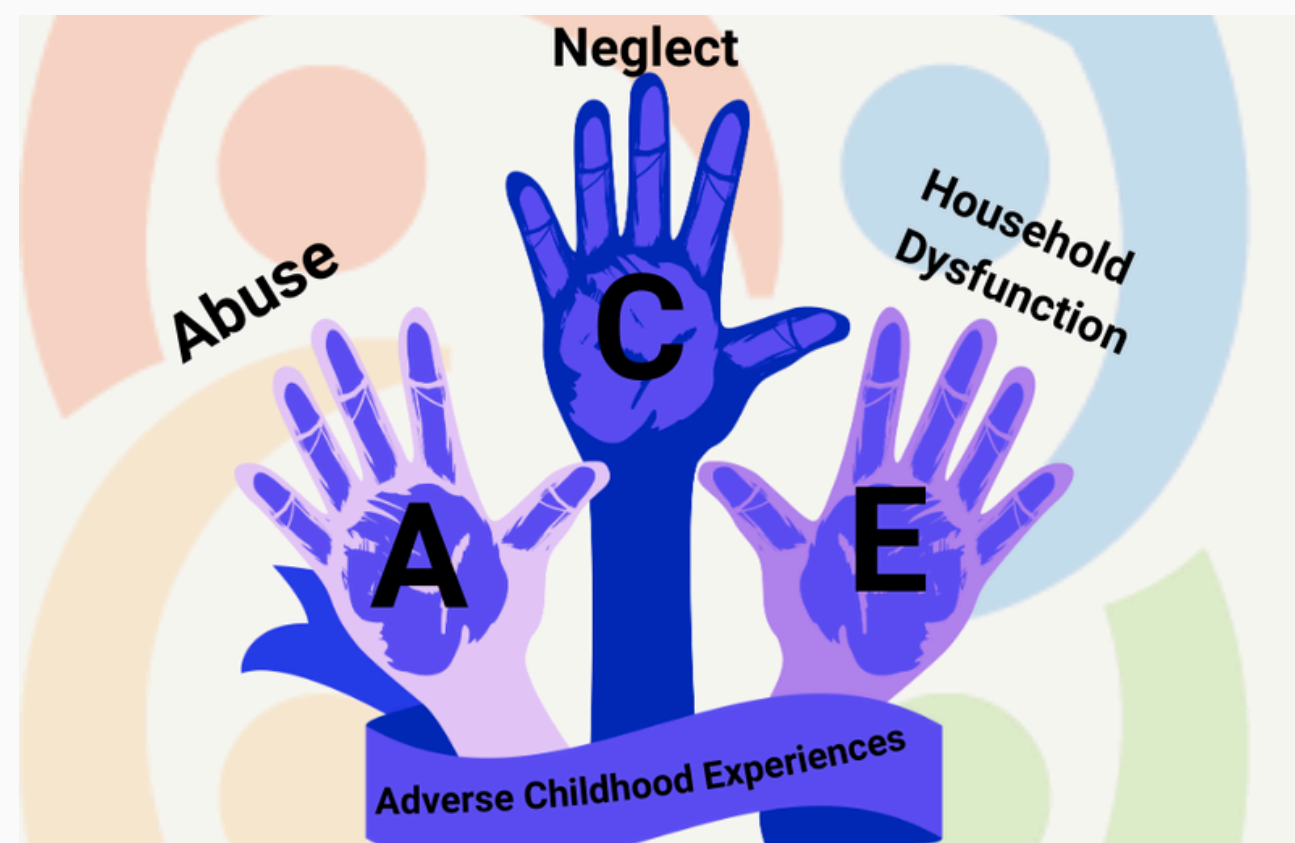
CONCLUSION



2021-2023, CHILDREN EXPOSED TO MULTIPLE ACES WERE SIGNIFICANTLY LESS LIKELY TO FLOURISH AND MORE LIKELY TO FACE EMOTIONAL AND BEHAVIORAL CHALLENGES THAN THOSE WITH MINIMAL ADVERSITY.

CONSISTENCY SIGNALS THAT THE CONNECTION BETWEEN ADVERSITY AND DEVELOPMENTAL CHALLENGES IS NOT TEMPORARY, BUT A **CONTINUOUS PUBLIC HEALTH CONCERN** AFFECTING MILLIONS OF CHILDREN NATIONWIDE.

OVERALL, OUR FINDINGS HIGHLIGHT THE LASTING **INFLUENCE OF FAMILY AND ENVIRONMENTAL STRESSORS ON CHILDHOOD WELL-BEING** AND EMPHASIZE THE IMPORTANCE OF PREVENTION AND EARLY INTERVENTION TO SUPPORT HEALTHY DEVELOPMENT.



WORKS CITED

GERVIN, DERRICK W., ET AL. "CENTERS FOR DISEASE CONTROL AND PREVENTION INVESTMENTS IN ADVERSE CHILDHOOD EXPERIENCE PREVENTION EFFORTS." AMERICAN JOURNAL OF PREVENTIVE MEDICINE, VOL. 62, NO. 6, JUNE 2022, PP. S1-S5, [HTTPS://DOI.ORG/10.1016/J.AMEPRE.2021.11.014](https://doi.org/10.1016/j.amepre.2021.11.014).

"NSCH FAST FACTS AND FAQs – DATA RESOURCE CENTER FOR CHILD AND ADOLESCENT HEALTH." WWW.CHILDHEALTHDATA.ORG, WWW.CHILDHEALTHDATA.ORG/LEARN-ABOUT-THE-NSCH/FAQ.

"NSCH 2021 22: PERCENT OF CHILDREN WHO ARE FLOURISHING, NATIONWIDE, ADVERSE CHILDHOOD EXPERIENCES." CHILDHEALTHDATA.ORG, CAHMI – DATA RESOURCE CENTER FOR CHILD AND ADOLESCENT HEALTH, 2021, WWW.CHILDHEALTHDATA.ORG/BROWSE/SURVEY/RESULTS?Q=10789&R=1&G=1232.

"NSCH 2022 23: PERCENT OF CHILDREN WHO ARE FLOURISHING, NATIONWIDE, ADVERSE CHILDHOOD EXPERIENCES." CHILDHEALTHDATA.ORG, CAHMI – DATA RESOURCE CENTER FOR CHILD AND ADOLESCENT HEALTH, 2022, WWW.CHILDHEALTHDATA.ORG/BROWSE/SURVEY/RESULTS?Q=11341&R=1&G=1231.

"NSCH 2021 22: CHILDREN WHO EXPERIENCED TWO OR MORE ADVERSE CHILDHOOD EXPERIENCES, NATIONWIDE, MENTAL, EMOTIONAL, DEVELOPMENTAL OR BEHAVIORAL PROBLEMS." CHILDHEALTHDATA.ORG, CAHMI – DATA RESOURCE CENTER FOR CHILD AND ADOLESCENT HEALTH, 2021, WWW.CHILDHEALTHDATA.ORG/BROWSE/SURVEY/RESULTS?Q=11835&R=1&G=1131.

NSCH 2022 23: PERCENT OF CHILDREN WHO HAVE EXPERIENCED 2 OR MORE ADVERSE CHILDHOOD EXPERIENCES, NATIONWIDE, MENTAL, EMOTIONAL, DEVELOPMENTAL OR BEHAVIORAL PROBLEMS." CHILDHEALTHDATA.ORG, CAHMI – DATA RESOURCE CENTER FOR CHILD AND ADOLESCENT HEALTH, 2022, WWW.CHILDHEALTHDATA.ORG/BROWSE/SURVEY/RESULTS?Q=11794&R=1&G=1173.

"TABLE | PERCENT OF CHILDREN WITH ADVERSE CHILDHOOD EXPERIENCES (ACES) BY TOTAL | STATE HEALTH ACCESS DATA ASSISTANCE CENTER." SHADAC.ORG, 2022, STATEHEALTHCOMPARE.SHADAC.ORG/TABLE/243/PERCENT-OF-CHILDREN-WITH-ADVERSE-CHILDHOOD-EXPERIENCES-ACES-BY-TOTAL#1/173.

"EXPLORE ADVERSE CHILDHOOD EXPERIENCES IN THE UNITED STATES | AHR." AMERICASHEALTHRANKINGS.ORG, 2023, WWW.AMERICASHEALTHRANKINGS.ORG/EXPLORE/MEASURES/ACES_8_OVERALL.

THANK YOU FOR LISTENING

THE MARK LEFT BEHIND

**A NATIONAL ANALYSIS OF ACE EXPOSURE
AND TEEN FLOURISHING (AGES 0-17) 2021-2023**



NISHA NIBU, ANNA KOPACHEVSKY, BRENDAN KWAN