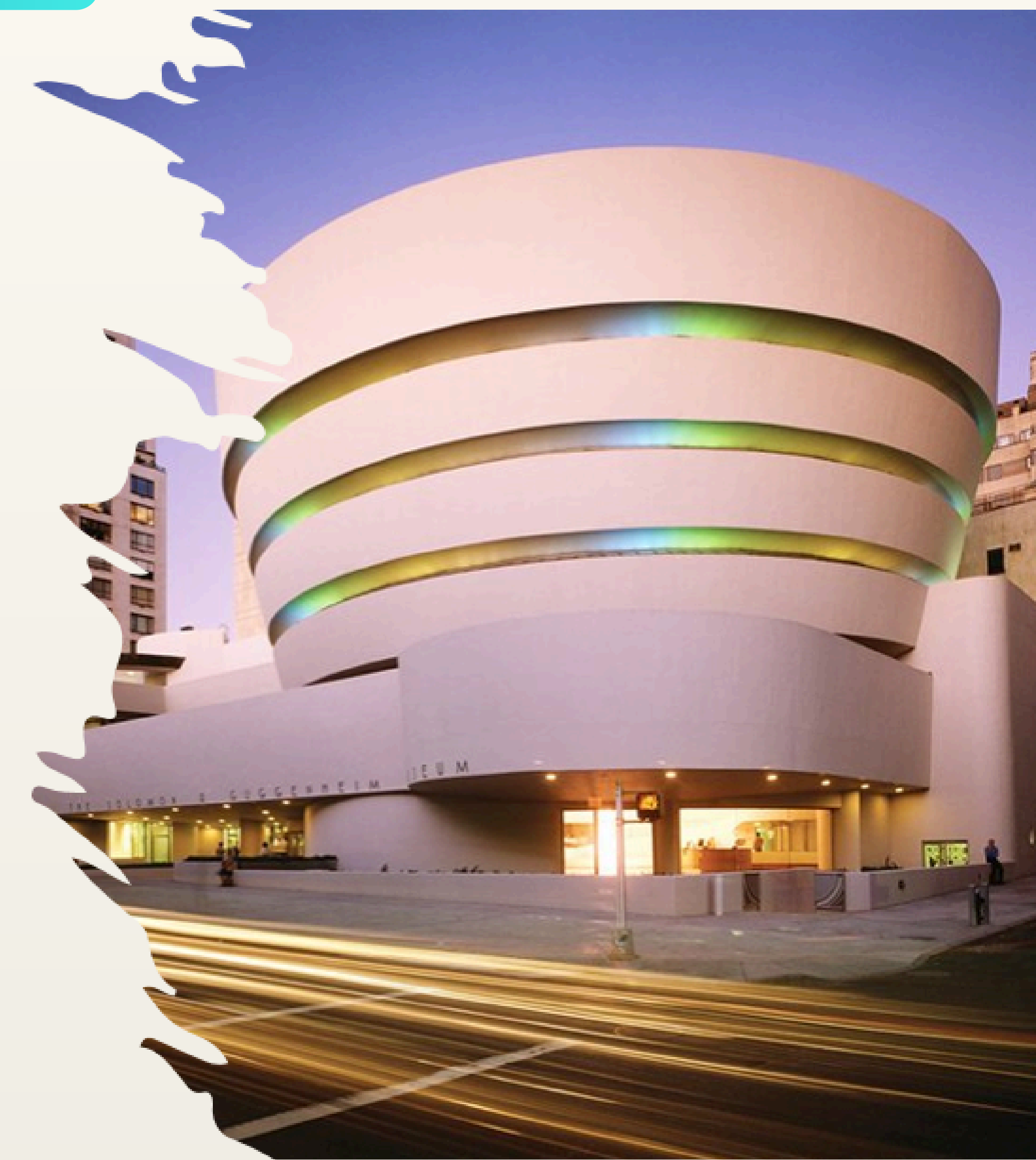


# Solomon R. Guggenheim Museum

By: Connie Pierre-Louis, Musfikah Maishah, Terrence Liao

## Overview

The Guggenheim is one of New York's most iconic institutions. Founded in 1959, this museum hosts a wide variety of art exhibits mainly centered around contemporary, impressionist, and abstract art. Solomon R. Guggenheim began his art collection by collecting popular upper-class art, but he eventually developed an interest in modernist art. In 1936, the first exhibition opened at the Gibbes Memorial Art Gallery, followed by the creation of the Guggenheim Foundation in 1937. Eventually, Guggenheim commissioned the architect who designed the iconic Guggenheim Museum known today.



## Architecture and Appearance

- The Guggenheim is famous for its spiral, cylindrical shape. The spiraling ramp is designed in a way so that even while one is walking up, artworks are still visible and seen from afar.
- Its unique form makes it both a landmark and a disruptor in the neighborhood's architectural style.
- Inside, its almost futuristic-like, having the top dome-shaped exterior as the only place for sunlight to get through.

## Meet the Architect: Frank Lloyd Wright

- Wright is known for his style of "organic agriculture," creating harmony between humanity and the environment.
- He has designed over 1,000 structures over 70 years, aiding in the creation of many offices, churches, schools, skyscrapers, hotels, museums, and other commercial projects.
- Some of his famous works are Inn at Price Tower in Oklahoma, Fallingwater in Pennsylvania, and the Frederick C. Robie House in Chicago.



## The Art Inside

Currently on display: Rashid Johnson's *A Poem for Deep Thinkers* (Art centered around Black Culture and Johnson's life as an artist.)



One of the works from *A Poem for Deep Thinkers*

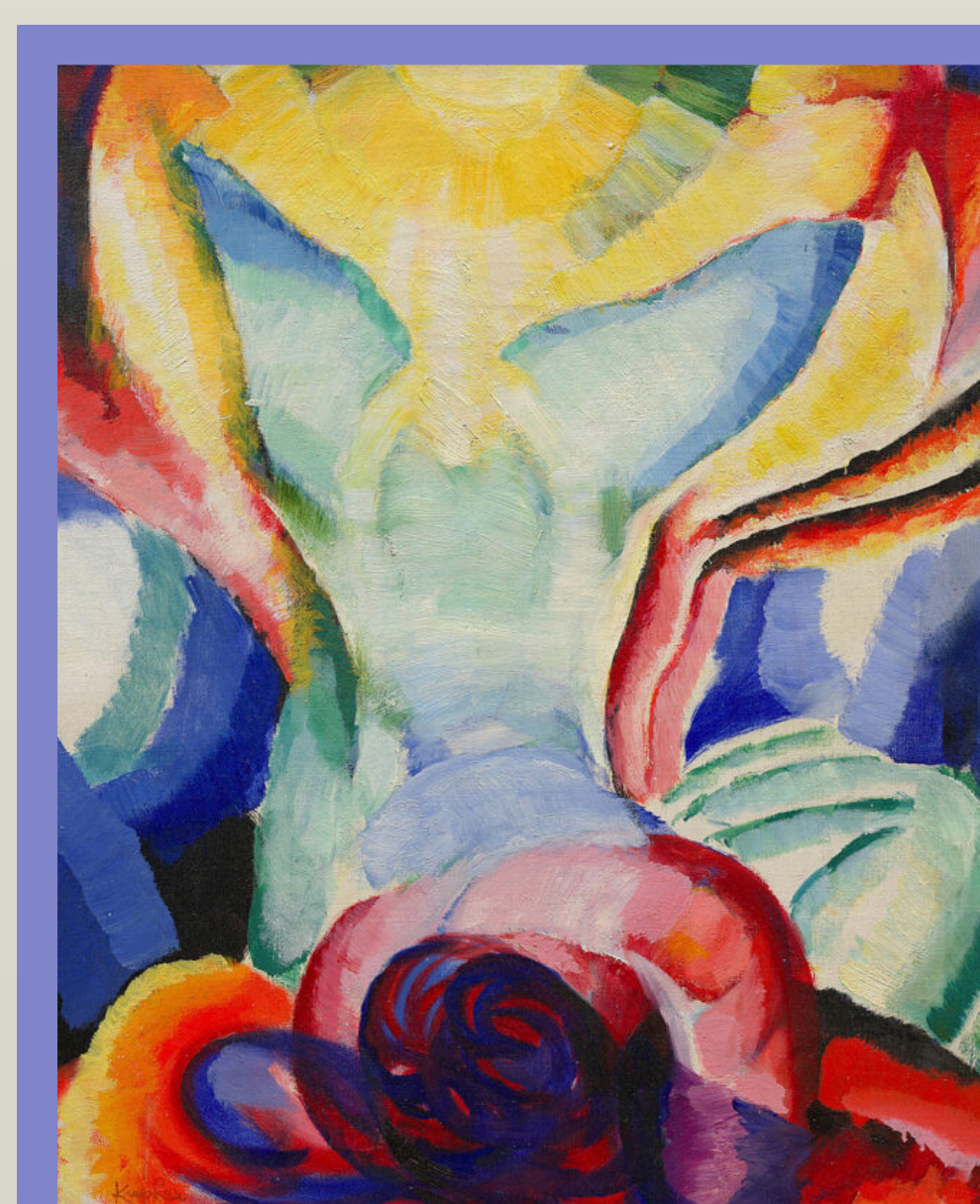
## Other Works



*Yellow Cow* (Franz Marc, 1911)



*On Brooklyn Bridge* (Albert Gleizes, 1917)



*The Colored One* (František Kupka 1919-20)